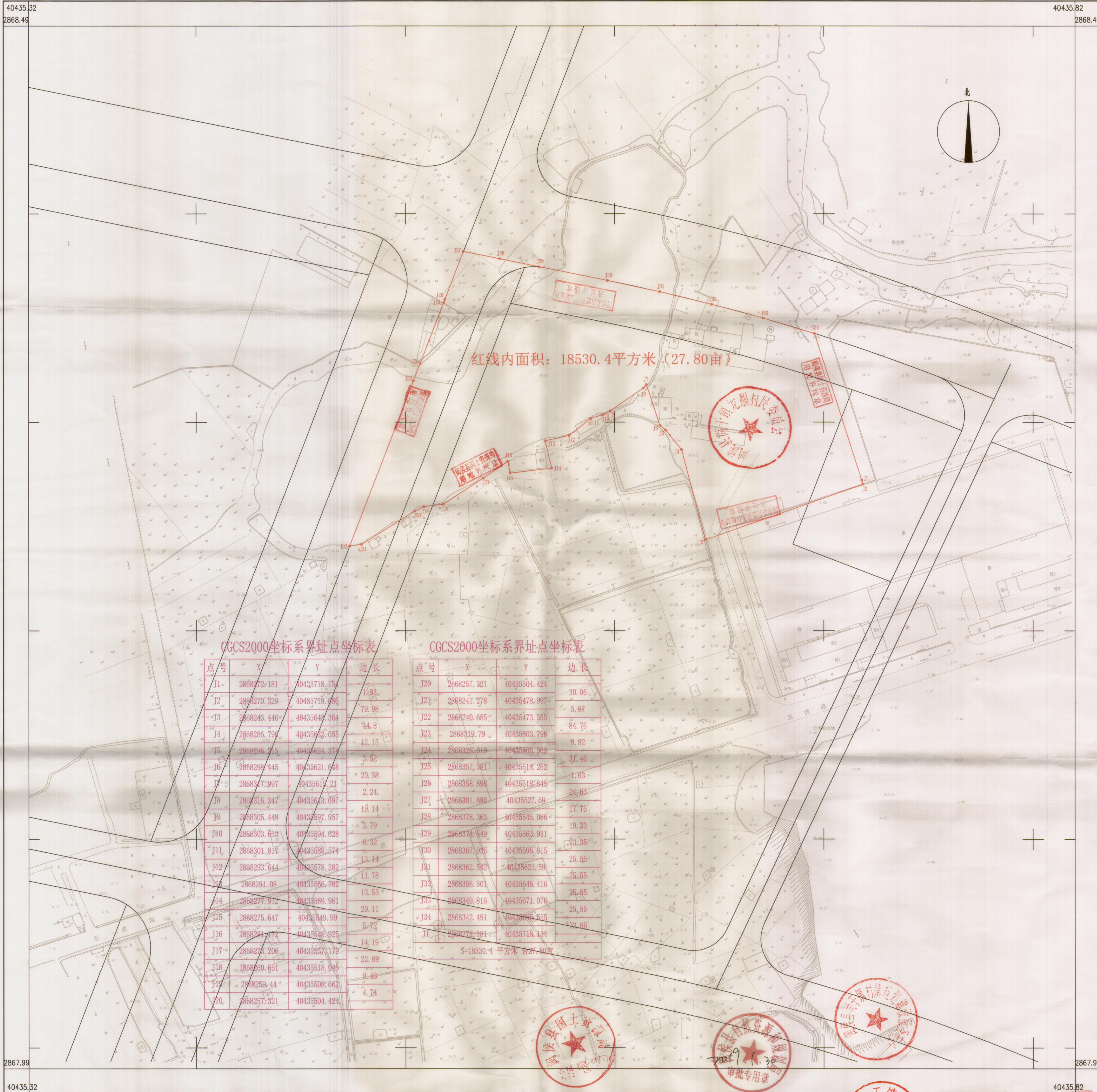


福州铨达汽配有限公司预申请工业项目（二期）勘测定界图  
2868.0-40435.3



CGCS2000坐标系界址点坐标表

点号	X	Y	边长
J1	2868272.181	40435718.154	1.93
J2	2868270.329	40485718.686	79.98
J3	2868243.446	40435649.364	44.8
J4	2868286.799	40435632.055	12.15
J5	2868296.715	40435624.37	3.52
J6	2868298.445	40435621.648	20.58
J7	2868347.997	40435617.21	2.24
J8	2868316.347	40435613.697	19.14
J9	2868305.449	40435697.957	3.79
J10	2868303.633	40435594.828	6.32
J11	2868301.817	40435588.574	13.14
J12	2868293.644	40435578.282	11.78
J13	2868291.08	40435566.782	13.55
J14	2868277.912	40435569.961	20.11
J15	2868275.647	40435549.99	5.72
J16	2868291.772	40435546.925	14.19
J17	2868276.206	40435537.179	22.89
J18	2868260.651	40435518.045	9.46
J19	2868259.44	40435508.662	4.74
J20	2868257.321	40435504.424	

CGCS2000坐标系界址点坐标表

点号	X	Y	边长
J20	2868257.321	40435504.424	30.06
J21	2868241.278	40435478.997	5.67
J22	2868240.685	40435473.355	84.76
J23	2868319.79	40435503.796	8.82
J24	2868328.019	40435506.969	31.46
J25	2868357.381	40435518.262	1.63
J26	2868358.898	40435518.845	24.63
J27	2868381.888	40435527.69	17.75
J28	2868378.363	40435545.086	19.23
J29	2868374.549	40435563.931	63.35
J30	2868367.935	40435596.615	25.55
J31	2868362.582	40435621.59	25.55
J32	2868356.501	40435646.416	25.55
J33	2868349.816	40435671.076	25.55
J34	2868342.491	40435665.555	73.85
J1	2868272.181	40435718.154	

S=18530.4 平方米 合27.80亩

福州市勘测院

2018年1月全野外数字化采集。  
CGCS2000坐标系，中央子午线120°。  
罗零高程系，等高距为1米。  
2007版图式

1:1000

福州勘测院  
测量员: 陈兆勇  
绘图员: 林配榕  
检查员: 谢长富  
证书编号: 甲测资字3500076  
发证机关: 国家测绘地理信息局