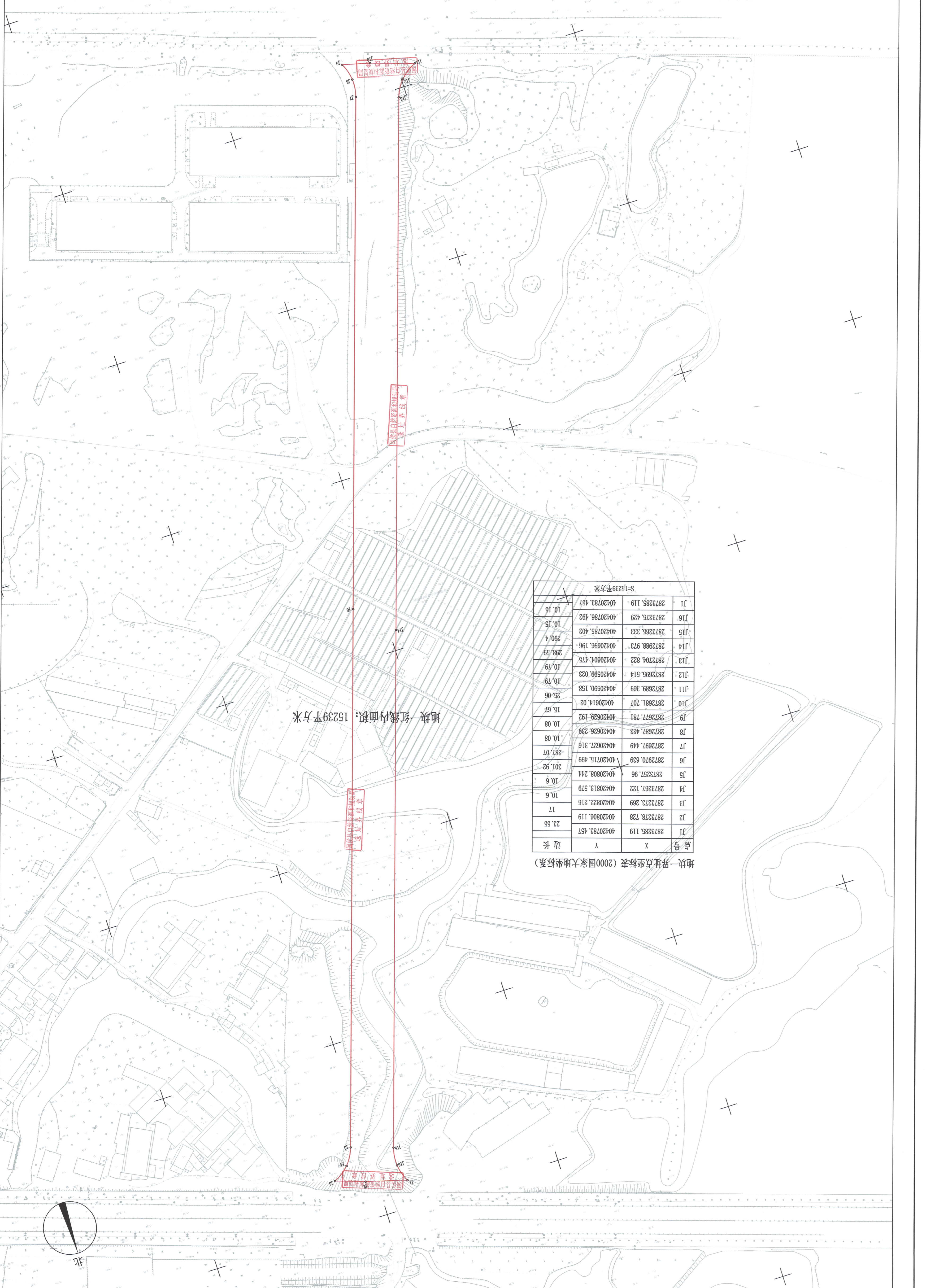


地块二界址点坐标表 (2000国家大地坐标系)

点号	X	Y	边长
J17	2872839.453	4042074.583	4.58
J18	2872838.518	4042079.085	20.01
J19	2872832.997	4042086.289	17.38
J20	2872827.556	4042086.419	11.21
J21	2872821.411	4042086.619	11.21
J22	2872811.794	4042089.658	53
J23	2872801.352	4042083.388	150.06
J24	2872818.547	4042087.29	68.16
J25	2872824.477	4042084.191	68.16
J26	2872822.009	4042086.808	68.16
J27	2872823.173	4042085.338	20.2
J28	2872811.473	4042083.338	20.2
J29	2872819.458	4042086.844	23.87
J30	2872817.672	4042087.088	8.5
J31	2872818.061	4042089.288	17.79
J32	2872813.308	4042081.538	17.79
J33	2872816.291	4042081.494	399.83
J34	2871858.023	4042023.786	24
J35	2871858.465	4042025.261	363.93
J36	2872175.687	4042039.911	

地块二界址点坐标表 (2000国家大地坐标系)

点号	X	Y	边长
J36	2872175.687	4042039.911	19.63
J37	2872175.687	4042039.911	19.63
J38	2872210.574	4042039.643	34.11
J39	2872221.716	4042039.125	20.28
J40	2872227.764	40420416.012	20.28
J41	2872239.17	4042042.531	20.28
J42	2872299.888	4042043.965	67.92
J43	2872302.036	4042049.174	67.92
J44	2872425.92	4042051.448	150.06
J45	2872568.725	4042060.544	150.06
J46	2872819.166	4042076.826	53
J47	2872839.453	4042077.881	10.45
J48	2872839.453	4042077.881	10.45
J49	2872839.453	4042077.881	10.45



地块一界址点坐标表 (2000国家大地坐标系)

点号	X	Y	边长
J1	2872838.119	4042073.457	23.55
J2	2872828.728	4042086.119	17
J3	2872827.809	4042082.216	10.6
J4	2872815.122	4042081.579	10.6
J5	2872825.96	4042088.244	10.8
J6	2872970.659	4042075.499	201.29
J7	2872971.449	4042077.319	287.07
J8	2872887.423	4042082.259	10.08
J9	2872871.781	4042082.192	15.67
J10	2872881.707	40420814.02	25.06
J11	2872889.309	4042080.158	10.79
J12	2872865.514	4042089.023	10.79
J13	2872804.822	4042084.475	256.59
J14	2872898.972	4042086.196	290.4
J15	2872865.333	4042078.402	10.15
J16	2872827.429	4042078.402	10.15
J17	2872835.119	4042073.457	10.15

红线总面积为38070平方米

