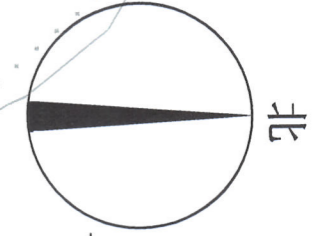


40421.839

40421.839



地块一界址点坐标表 (2000国家大地坐标系)

点号	X	Y	边长
J1	2878509.839	40421022.486	31.59
J2	2878522.927	40421051.233	5.84
J3	2878517.525	40421063.444	5.84
J4	2878512.991	40421067.121	75.09
J5	2878460.935	40421111.241	75.09
J6	2878402.793	40421158.765	95.86
J7	2878332.284	40421223.683	95.86
J8	2878267.561	40421294.410	13.27
J9	2878262.366	40421306.620	13.27
J10	2878255.956	40421319.395	65.81
J11	2878228.142	40421265.530	17.42
J12	2878243.248	40421274.200	17.42
J13	2878259.422	40421267.738	98.86
J14	2878326.532	40421195.143	98.86
J15	2878400.519	40421129.572	76.72
J16	2878459.139	40421080.072	76.72
J1	2878609.839	40421022.486	76.72

S=9177平方米

地块一红线内面积: 9177平方米

红线总面积为40021平方米

地块二界址点坐标表 (2000国家大地坐标系)

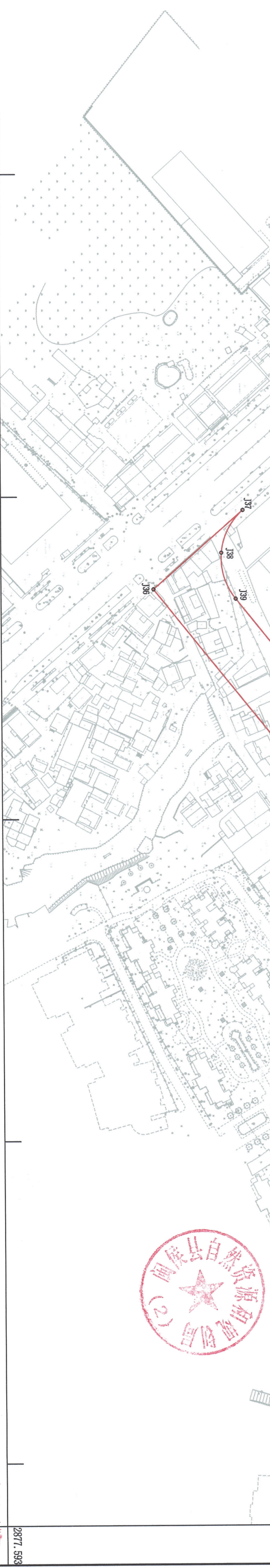
点号	X	Y	边长
J36	2877688.116	40421257.713	74.22
J37	2877743.808	40421208.646	29.76
J38	2877730.461	40421235.243	29.76
J39	2877739.173	40421238.697	367.98
J40	2877970.051	40421558.239	16.70
J41	2877955.003	40421557.681	16.70
J42	2878000.390	40421551.183	322.51
J43	2878217.958	40421313.109	13.27
J44	2878223.154	40421300.898	13.27
J17	2878219.564	40421288.123	13.27

S=30844平方米

地块二红线内面积: 30844平方米

地块一界址点坐标表 (2000国家大地坐标系)

点号	X	Y	边长
J17	2878219.564	40421288.123	65.56
J18	2878257.234	40421341.782	17.30
J19	2878242.146	40421333.314	17.30
J20	2878226.098	40421339.781	166.29
J21	2878113.922	40421462.530	10.37
J22	2878110.003	40421472.131	10.37
J23	2878113.250	40421481.981	7.38
J24	2878117.840	40421487.759	16.00
J25	2878105.311	40421497.712	12.57
J26	2878094.083	40421492.051	12.57
J27	2878082.491	40421496.923	106.35
J28	2878010.745	40421575.431	14.56
J29	2878005.508	40421589.016	14.56
J30	2878010.637	40421602.642	59.93
J31	2878039.068	40421655.396	59.93
J32	2878067.098	40421712.547	36.43
J33	2878022.948	40421725.245	68.31
J34	2878001.850	40421660.275	68.31
J35	2877965.750	40421602.284	442.50
J36	2877688.116	40421257.713	442.50



福州市勘测院有限公司

2025年02月全野外数字化采集
2000国家大地坐标系
罗盘高程系, 等高距为1米
2017版式

1:2000

福州市勘测院有限公司
测绘资质等级: 甲级
证书编号: 闽测资字[2010]0075
法定代表人: 陈伟
发证机关: 福建省自然资源厅