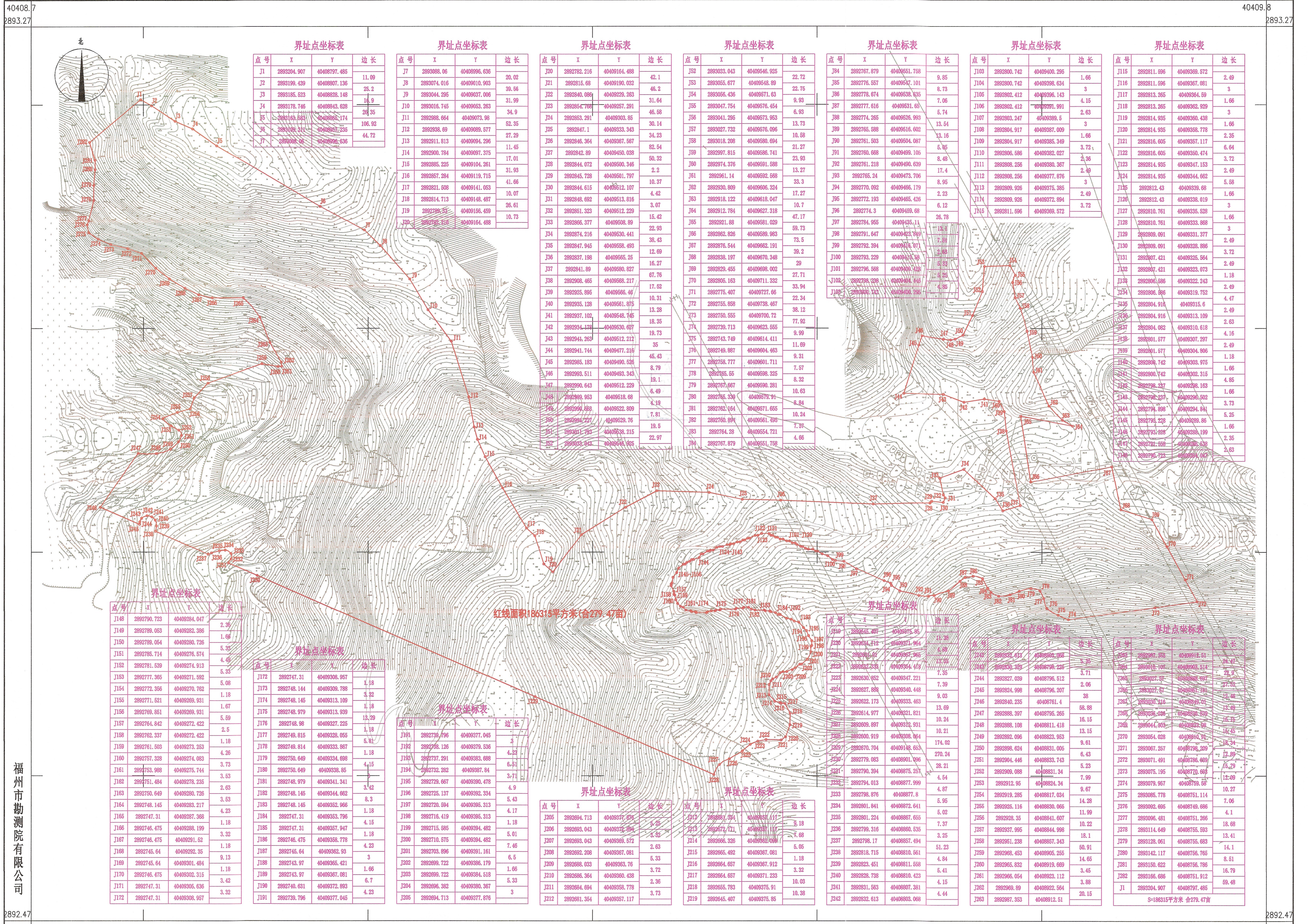


# 闽侯县城市公益性公墓主体建设项目红线图

## 2892.5-40408.7



界址点坐标表

点号	X	Y	边长
J1	2893204.907	40408797.465	11.09
J2	2893199.439	40408807.136	25.2
J3	2893185.523	40408828.148	18.9
J4	2893178.746	40408843.628	28.35
J5	2893165.554	40408855.174	106.92
J6	2893159.211	40408867.235	44.72
J7	2893088.06	40408996.636	

界址点坐标表

点号	X	Y	边长
J7	2893088.06	40408996.636	20.02
J8	2893074.016	40409010.903	39.56
J9	2893044.295	40409037.006	31.99
J10	2893016.745	40409053.263	34.9
J11	2892988.664	40409073.98	52.35
J12	2892938.69	40409089.577	27.29
J13	2892911.813	40409094.296	11.45
J14	2892900.784	40409097.375	17.01
J15	2892885.225	40409104.261	31.93
J16	2892867.284	40409119.715	41.66
J17	2892821.506	40409141.053	10.07
J18	2892814.713	40409148.487	26.61
J19	2892798.31	40409156.459	10.73
J20	2892782.216	40409164.488	

界址点坐标表

点号	X	Y	边长
J20	2892782.216	40409164.488	42.1
J21	2892815.66	40409190.032	46.2
J22	2892840.086	40409229.263	31.64
J23	2892854.768	40409267.291	46.68
J24	2892853.291	40409303.85	30.14
J25	2892847.1	40409333.343	34.23
J26	2892846.364	40409367.567	82.54
J27	2892842.89	40409450.038	50.32
J28	2892844.072	40409500.346	2.2
J29	2892845.728	40409501.797	10.37
J30	2892844.615	40409512.107	4.42
J31	2892848.692	40409513.816	3.07
J32	2892851.323	40409512.229	15.42
J33	2892866.377	40409508.89	22.93
J34	2892874.216	40409530.441	38.43
J35	2892847.945	40409558.493	12.69
J36	2892837.198	40409565.25	16.27
J37	2892841.89	40409580.827	67.76
J38	2892808.465	40409568.217	17.62
J39	2892825.895	40409566.46	10.31
J40	2892935.128	40409561.875	13.28
J41	2892937.102	40409548.745	18.35
J42	2892934.438	40409530.627	19.73
J43	2892944.263	40409512.212	35
J44	2892941.744	40409477.216	45.43
J45	2892985.183	40409490.526	8.79
J46	2892993.511	40409493.343	19.1
J47	2892990.643	40409512.229	6.49
J48	2892989.953	40409518.68	4.19
J49	2892959.699	40409522.809	7.81
J50	2892994.227	40409529.76	19.5
J51	2893011.793	40409538.215	22.97
J52	2893033.043	40409546.925	

界址点坐标表

点号	X	Y	边长
J52	2893033.043	40409546.925	22.72
J53	2893055.677	40409548.89	22.75
J54	2893056.436	40409571.63	9.93
J55	2893047.754	40409576.454	6.93
J56	2893041.295	40409573.963	13.73
J57	2893027.732	40409576.096	10.58
J58	2893018.208	40409584.694	21.27
J59	2892997.815	40409586.741	23.93
J60	2892974.376	40409591.588	13.27
J61	2892961.114	40409592.588	33.3
J62	2892930.809	40409606.324	17.27
J63	2892918.122	40409618.047	10.7
J64	2892912.784	40409627.318	47.17
J65	2892921.88	40409581.029	59.73
J66	2892862.626	40409688.963	73.5
J67	2892876.544	40409662.191	39.2
J68	2892838.197	40409670.348	29
J69	2892829.455	40409698.002	27.71
J70	2892805.163	40409711.332	33.94
J71	2892775.407	40409727.66	22.34
J72	2892755.858	40409738.467	38.12
J73	2892750.555	40409700.72	77.92
J74	2892739.713	40409623.555	9.99
J75	2892745.749	40409614.411	11.69
J76	2892749.887	40409604.463	9.31
J77	2892758.777	40409601.710	7.57
J78	2892765.55	40409598.325	8.32
J79	2892767.667	40409590.281	10.63
J80	2892765.330	40409579.91	8.84
J81	2892762.164	40409571.655	10.24
J82	2892760.894	40409561.495	7.97
J83	2892764.28	40409554.728	4.66
J84	2892767.879	40409551.758	

界址点坐标表

点号	X	Y	边长
J84	2892767.879	40409551.758	9.85
J85	2892776.557	40409547.101	8.73
J86	2892778.674	40409538.635	7.06
J87	2892777.616	40409531.65	5.74
J88	2892774.265	40409526.993	13.54
J89	2892765.588	40409516.602	13.16
J90	2892761.503	40409504.087	5.05
J91	2892760.668	40409499.105	8.48
J92	2892761.218	40409490.639	17.4
J93	2892765.24	40409473.706	8.95
J94	2892770.092	40409466.179	2.23
J95	2892772.193	40409465.426	6.12
J96	2892774.3	40409469.68	26.78
J97	2892784.955	40409455.11	13.4
J98	2892791.647	40409423.349	7.88
J99	2892792.394	40409416.707	2.48
J100	2892793.229	40409413.58	5.83
J101	2892796.568	40409404.128	5.25
J102	2892798.239	40409404.816	4.85
J103	2892800.742	40409400.295	1.66
J104	2892800.742	40409398.634	3
J105	2892802.412	40409396.143	4.15
J106	2892802.412	40409391.991	2.63
J107	2892803.247	40409389.5	3
J108	2892804.917	40409387.009	1.66
J109	2892804.917	40409385.349	3.72
J110	2892806.586	40409382.027	2.36
J111	2892808.256	40409380.367	2.49
J112	2892808.256	40409377.876	3
J113	2892809.926	40409375.385	2.49
J114	2892809.926	40409372.894	3.72
J115	2892811.596	40409369.572	

界址点坐标表

点号	X	Y	边长
J115	2892811.596	40409369.572	2.49
J116	2892811.596	40409367.081	3
J117	2892813.265	40409364.649	1.66
J118	2892813.265	40409362.929	3
J119	2892814.935	40409360.438	1.66
J120	2892814.935	40409358.778	2.35
J121	2892816.605	40409357.117	6.64
J122	2892816.605	40409350.474	3.72
J123	2892814.935	40409347.153	2.49
J124	2892814.935	40409344.662	5.58
J125	2892816.605	40409339.68	1.66
J126	2892812.43	40409338.019	3
J127	2892810.761	40409335.528	1.66
J128	2892810.761	40409333.868	3
J129	2892809.091	40409331.377	2.49
J130	2892809.091	40409328.886	3.72
J131	2892807.421	40409325.64	2.49
J132	2892807.421	40409323.073	1.18
J133	2892806.586	40409322.243	2.49
J134	2892806.586	40409319.752	4.47
J135	2892804.916	40409315.109	2.49
J136	2892804.916	40409313.668	2.63
J137	2892804.082	40409310.618	4.16
J138	2892801.577	40409307.297	2.49
J139	2892801.577	40409304.806	1.18
J140	2892800.742	40409303.975	1.66
J141	2892800.742	40409302.315	4.85
J142	2892798.237	40409298.163	1.66
J143	2892798.237	40409296.502	3.73
J144	2892794.898	40409294.641	5.25
J145	2892794.228	40409289.86	1.66
J146	2892793.229	40409288.199	2.35
J147	2892791.556	40409286.238	2.63
J148	2892790.723	40409284.007	

界址点坐标表

点号	X	Y	边长
J148	2892790.723	40409284.007	2.35
J149	2892789.063	40409282.386	1.66
J150	2892789.064	40409280.726	5.35
J151	2892786.714	40409276.574	4.49
J152	2892781.539	40409274.913	5.33
J153	2892777.365	40409271.582	5.08
J154	2892772.366	40409270.762	1.18
J155	2892771.521	40409269.931	1.67
J156	2892769.861	40409269.931	2.5
J157	2892764.842	40409272.422	5.59
J158	2892762.337	40409272.422	1.18
J159	2892761.503	40409273.253	4.26
J160	2892757.328	40409274.083	3.73
J161	2892753.988	40409276.744	3.53
J162	2892751.484	40409278.235	2.63
J163	2892750.649	40409280.726	3.53
J164	2892748.145	40409283.217	4.23
J165	2892747.31	40409287.368	1.18
J166	2892746.475	40409289.199	3.32
J167	2892746.475	40409291.62	1.18
J168	2892745.64	40409292.35	9.13
J169	2892745.64	40409301.484	1.18
J170	2892746.475	40409302.315	3.42
J171	2892747.31	40409305.636	3.32
J172	2892747.31	40409308.957	

界址点坐标表

点号	X	Y	边长
J148	2892790.723	40409284.007	2.35
J149	2892789.063	40409282.386	1.66
J150	2892789.064	40409280.726	5.35
J151	2892786.714	40409276.574	4.49
J152	2892781.539	40409274.913	5.33
J153	2892777.365	40409271.582	5.08
J154	2892772.366	40409270.762	1.18
J155	2892771.521	40409269.931	1.67
J156	2892769.861	40409269.931	2.5
J157	2892764.842	40409272.422	5.59
J158	2892762.337	40409272.422	1.18
J159	2892761.503	40409273.253	4.26
J160	2892757.328	40409274.083	3.73
J161	2892753.988	40409276.744	3.53
J162	2892751.484	40409278.235	2.63
J163	2892750.649	40409280.726	3.53
J164	2892748.145	40409283.217	4.23
J165	2892747.31	40409287.368	1.18
J166	2892746.475	40409289.199	3.32
J167	2892746.475	40409291.62	1.18
J168	2892745.64	40409292.35	9.13
J169	2892745.64	40409301.484	1.18
J170	2892746.475	40409302.315	3.42
J171	2892747.31	40409305.636	3.32
J172	2892747.31	40409308.957	

界址点坐标表

点号	X	Y	边长
J172	2892747.31	40409308.957	1.18
J173	2892748.144	40409309.788	3.32
J174	2892748.145	40409313.109	1.18
J175	2892748.979	40409313.939	18.29
J176	2892748.98	40409327.225	1.18
J177	28927		